

TECHNICAL MANUAL

ORGANIZATIONAL DIRECT SUPPORT, AND GENERAL SUPPORT MAINTENANCE

REPAIR PARTS AND SPECIAL TOOLS LISTS

(INCLUDING DEPOT MAINTENANCE REPAIR PARTS AND SPECIAL TOOLS)

FOR

SIGNAL GENERATOR TS-3123/FSM-1

(MSM 6625-00-752-8678)

HEADQUARTERS, DEPARTMENT OF THE ARMY

OCTOBER 1977

TECHNICAL MANUAL }
NO. 11-6625-935-24P }

HEADQUARTERS
DEPARTMENT OF THE ARMY
WASHINGTON, DC, 14 October 1977

**ORGANIZATIONAL, DIRECT SUPPORT, AND GENERAL SUPPORT MAINTENANCE
 REPAIR PARTS AND SPECIAL TOOLS LISTS
 (INCLUDING DEPOT MAINTENANCE REPAIR PARTS AND SPECIAL TOOLS)
 FOR
 SIGNAL GENERATOR TS-312B/FSM-1
 (NSN 6625-00-752-8678)**

Current as of 12 July 1977

REPORTING OF ERRORS

You can improve this manual by recommending improvements using DA Form 2028-2 (Test) located in the back of the manual. Simply tear out the self-addressed form, fill it out as shown on the sample, fold it where shown, and drop it in the mail.

If there are no blank DA Form 2028-2 (Test) in the back of your manual, use the standard DA Form 2028 (Recommended Changes to Publications and Blank Forms) and forward to the Commander, US Army Electronics Command, ATTN DRSEL-MA-Q, Fort Monmouth, NJ 07703.

In either case a reply will be furnished direct to you.

Table of Contents

	PAGE	ILLUS FIGURE
SECTION I. Introduction	1	
I I. Repair parts list	6	
GROUP 00. Signal Generator TS-312B/FSM-1	5	1-3
SECTION III. Special tools list (Not applicable)		
I V. National stock number and part number index	10	

SECTION I

INTRODUCTION

1. SCOPE

This manual lists spares and repair parts; special tools; special test, measurement, and diagnostic equipment (TMDE), and other special support equipment required for performance of organizational, direct support, and general support maintenance of the TS-312B/FSM 1 It authorizes the requisitioning and issue of spares and repair parts as indicated by the source and maintenance codes.

2. GENERAL

This Repair Parts and Special Tools List is divided into the following sections

a. Section II Repair Parts List. A list of spares and repair parts authorized for use in the performance of maintenance. The list also includes parts which must be removed for replacement of the authorized parts. Parts lists are composed of functional groups in numeric sequence with the parts in each group listed in figure and item number sequence.

b. Section III Special Tools List. Not applicable.

c. Section IV National Stock Number and Part Number Index. A list, in National item identification number (NIIN) sequence of all National stock numbers (NSN) appearing in the listings, followed by a list, in alphabetic sequence of all part numbers appearing in the listings. National stock numbers and part numbers are cross referenced to each illustration figure and item number appearance.

3. EXPLANATION OF COLUMNS

a. Illustration. This column is divided as follows.

(1) *Figure number* Indicates the figure number of the illustration on which the item is shown.

(2) *Item number* The number used to identify item called out in the illustration.

b. Source Maintenance and Recoverability (SMR) Codes.

(1) *Source code.* Source codes indicate the manner of acquiring support items for maintenance, repair, or overhaul of end items. Source codes are entered in the first and second positions

of the Uniform SMR Code format as follows:

<i>Code</i>	<i>Definition</i>
PA —	Item procured and stocked for anticipated or known usage.
XD —	A support item that is not stocked. When required, item will be procured through normal supply channels.

NOTE

Cannibalization or salvage may be used as a source of supply for any items source coded above except those coded XA and aircraft support items as restricted by AR 706-42.

(2) *Maintenance code.* Maintenance codes are assigned to indicate the levels of maintenance authorized to USE and REPAIR support items. The maintenance codes are entered in the third and fourth positions of the Uniform SMR Code format as follows

(a) The maintenance code entered in the third position will indicate the lowest maintenance level authorized to remove, replace, and use the support item. The maintenance code entered in the fourth position will indicate one of the following levels of maintenance

<i>Code</i>	<i>Application/Explanation</i>
O —	Support item is removed, replaced, used at the organizational level.
H —	Support item is removed, replaced, used at the general support level.

(b) The maintenance code entered in the fourth position indicates whether the item is to be repaired and identifies the lowest maintenance level with the capability to perform complete repair (i.e. all authorized maintenance functions). This position will contain one of the following maintenance codes

<i>Code</i>	<i>Application/Explanation</i>
Z —	Nonreparable. No repair is authorized

(3) *Recoverability code* Recoverability codes are assigned to support items to indicate the disposition action on unserviceable items. The recoverability code is entered in the fifth position of the Uniform SMR Code format as follows

<i>Recoverability codes</i>	<i>Definition</i>
Z —	Nonreparable item. When unserviceable, condemn and dispose at the level indicated in position 3.

c. National Stock Number Indicates the National stock number assigned to the item and will be used for requisitioning purposes.

d. Part Number Indicates the primary number used by the manufacturer (individual, company firm, corporation, or Government activity), which controls the design and characteristics of the item by means of its engineering drawings, specifications, standards, and inspection requirements to identify an item or range of items.

NOTE

When a stock numbered item is questioned, the repair part received may have a different part number than the part being replaced.

e. Federal Supply Code for Manufacturer (FSCM). The FSCM is a 5-digit numeric code listed in SB 708-42 which is used to identify the manufacturer distributor or Government agency etc.

f. Description. Indicates the Federal item name and, if required, a minimum description to identify the item.

g. Unit of Measure (UM) Indicates the standard of the basic quantity of the listed item as used in performing the actual maintenance function. This measure is expressed by a two-character alphabetical abbreviation (e.g., ea, in, pr etc). When the unit of measure differs from the unit of issue, the lowest unit of issue that will satisfy the required units of measure will be requisitioned.

h. Quantity Incorporated in Unit. Indicates the quantity of the item used in the breakout shown on the illustration figure, which is prepared for a functional group, subfunctional group, or an assembly

4. SPECIAL INFORMATION

The following publication pertains to the TS-312B/FSM-1 and its components
 TM 11-6625-935-12, Audio Oscillators TS-312/FSM-1, TS-312A/FSM 1, and TS-382U and Signal Generator TS-312B/FSM 1

5. HOW TO LOCATE REPAIR PARTS

a. When National stock number or part number is unknown.

(1) *First.* Using the table of contents, determine the functional group within which the item belongs.

(2) *Second.* Find the illustration covering the functional group to which the item belongs.

(3) *Third.* Identify the item on the illustration and note the illustration figure and item number of the item.

(4) *Fourth.* Using the Repair Parts Listing find the figure and item number noted on the illustration.

b. When National stock number or part number is known.

(1) *First.* Using the Index of National Stock Numbers and Part Numbers, find the pertinent National stock number or part number. This index is in NIIN sequence followed by a list of part numbers in alphameric sequence, cross-referenced to the illustration figure number and item number.

(2) *Second.* After finding the figure and item number locate the figure and item number in the repair parts list.

6. ABBREVIATIONS

Not applicable.

(Next printed page is 4)

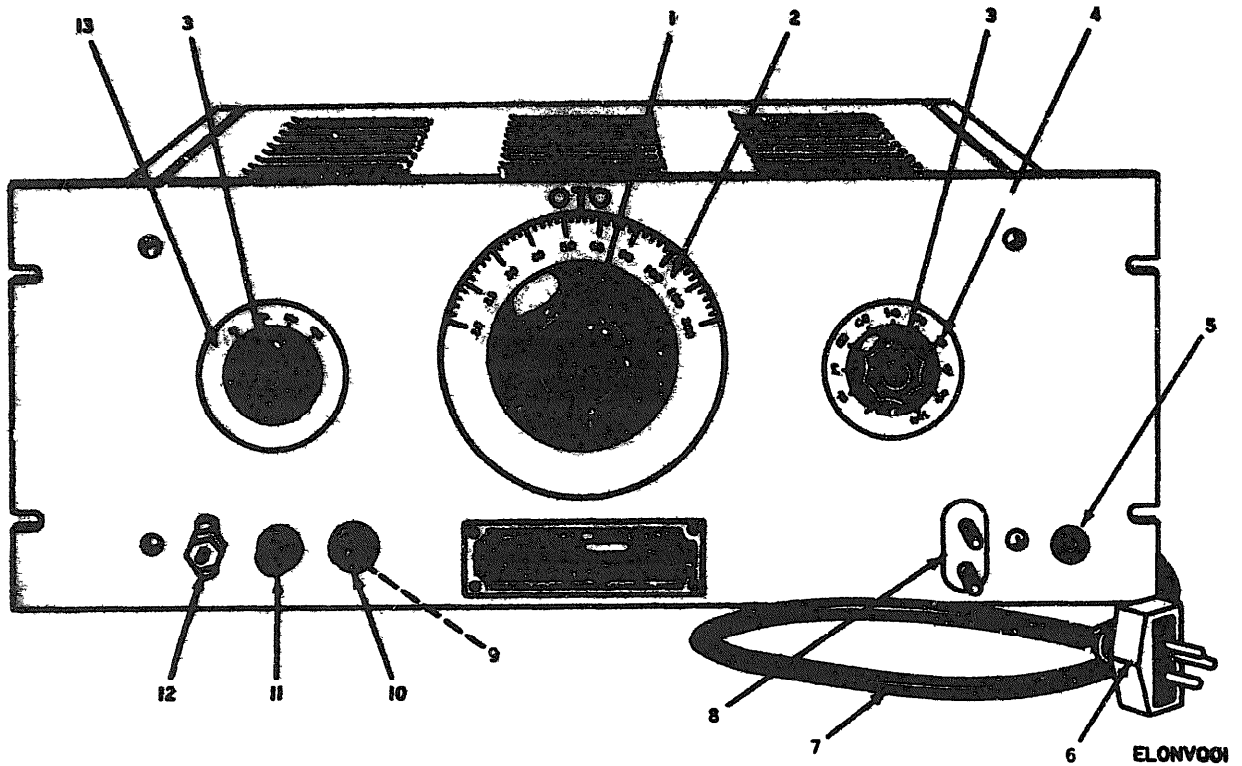
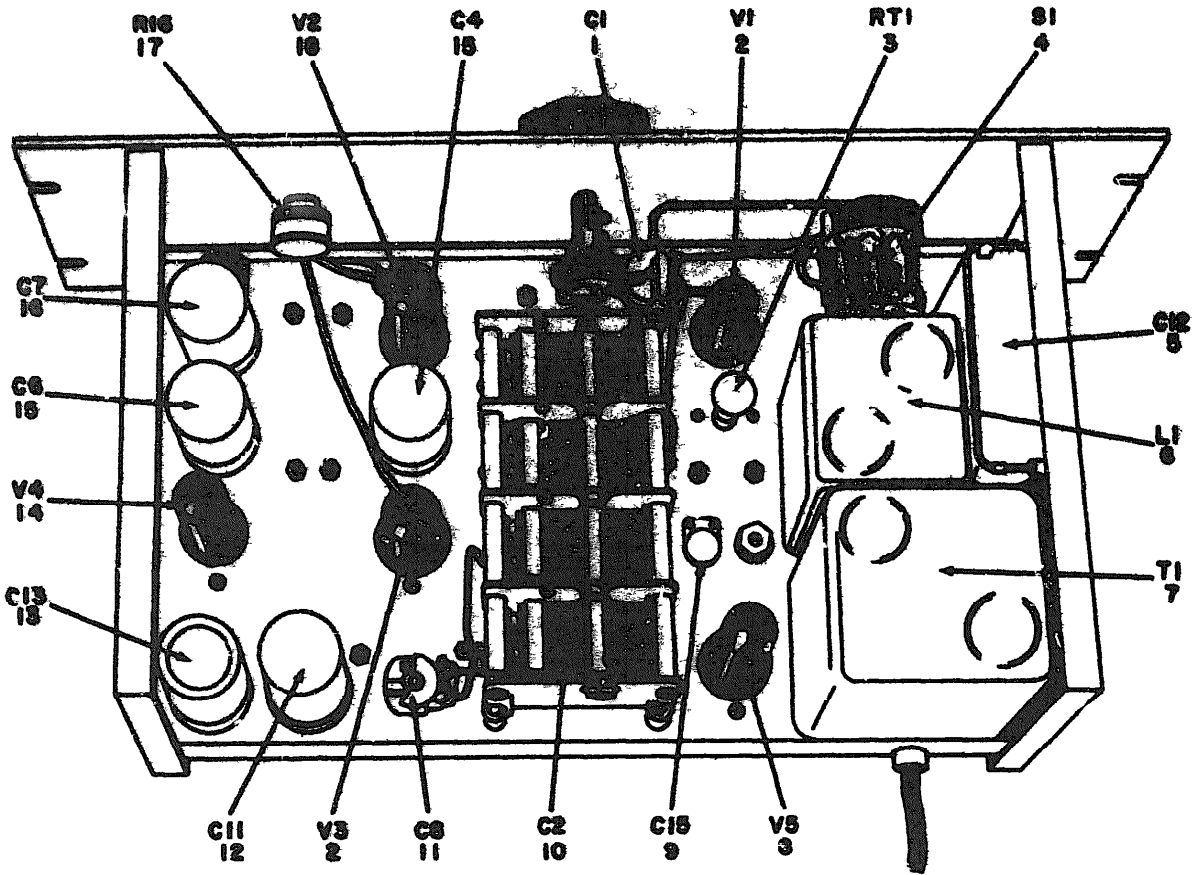


FIGURE 1. SIGNAL GENERATOR TS-312B/FSM-1, FRONT PANEL

QUANTITY		UNIT	MATERIAL STOCK NUMBER	PART NUMBER	FORM	DESCRIPTION	USABLE ON CODE	UOM	QTY INC IN UNIT
REQD	AVAIL								
GROUP OF SIGNAL CHANNEL TS-312/FM-1									
1	1	REPEX		S312-0000X	78376	HEAD, FREQ SELECTOR		EA	1
1	2	REPEX		A1304-15	14140	SWAL CONTROL, FREQ		EA	1
1	3	REPEX		S300-00002	78376	HEAD TUN AND VOL CONT		EA	2
1	4	REPEX		A1304-14	14140	SWAL, VOLUME CONTROL		EA	1
1	5	POWER	5335-00-185-0317	A0001A3-6	02004	CONNECT, POWER		EA	1
1	6	POWER	5336-00-119-4913	7887	78040	CONNECTOR, PLUG, ELEC		EA	1
1	7	POWER	6165-00-032-9937	0002L075-10-0000	01540	CABLE, POWER, ELEC		ET	7
1	8	POWER	5348-00-848-7682	FRP	71313	POST, SIGNALING		EA	1
1	9	POWER	6320-00-185-0766	47	50033	LAMP, INCANDESCENT		EA	1
1	10	POWER	6310-00-347-1790	00 111	78010	LENS, IND LIGHT		EA	1
1	11	REPEX		REP-CAP	10130	CAP, ELECTRICAL		EA	1
1	12	POWER	5939-00-655-1618	W530000-32	90000	SWITCH TUMBLE		EA	1
1	13	REPEX		A1304-13	14140	SWAL, RANGE		EA	1



ITEMS LISTED BUT NOT SHOWN

REF. DES.	ITEM NO.	REF. DES.	ITEM NO.
R1	19	RIA	21
R2	19	R2A	21
R3	19	R3A	21
R4	19	R4A	21
R5	20	R5A	22
R6	20	R6A	22
R7	20	R7A	22
R8	20	R8A	22

ELONV002

FIGURE 2. SIGNAL GENERATOR TS-312/FSM-1, TOP VIEW

QTY	UNIT	PART NUMBER	DESCRIPTION	USABLE ON CODE	QTY	UNIT	
							QTY
1	EA	180-70-23	74070	CAPACITOR, VAC, AIR	EA	1	
1	EA	637	81340	ELECTRON TUBE	EA	2	
1	EA	386-G-12W	88168	LAMP INCANDESCENT	EA	1	
1	EA	88878C	70854	SWITCH, SPST	EA	1	
1	EA	CF9816F800L1	82340	CAPACITOR, FIB, PPR	EA	1	
1	EA	31043	17857	CONE, JARS AND PLTR	EA	1	
1	EA	31042	7388	TRANSFORMER, PWR	EA	1	
1	EA	584	81340	ELECTRON TUBE	EA	1	
1	EA	CF110408	81340	CAPACITOR, VAC, CER	EA	1	
1	EA	5910-00-615-0119	81727	77030	CAPACITOR, VAC, AIR	EA	1
1	EA	5910-00-882-7283	CT12806J	81340	CAPACITOR, VAC, AIR	EA	1
1	EA	7388	81340	CAPACITOR, ELECT	EA	1	
1	EA	CE41F80R	81340	CAPACITOR, ELECT	EA	1	
1	EA	5801-00-116-3839	81340	ELECTRON TUBE	EA	1	
1	EA	CE41F80R	81340	CAPACITOR, ELECT	EA	2	
1	EA	CE41F80R	81340	CAPACITOR, ELECT	EA	1	
1	EA	5960-00-517-9113	81340	RESISTOR, VARIABLE	EA	1	
1	EA	81340	88131	ELECTRON TUBE	EA	1	
4	EA	88884	88884	RESISTOR, FIB, FILM	EA	4	
4	EA	88884	88884	RESISTOR, FIB, FILM	EA	4	
4	EA	88884	88884	RESISTOR, FIB, FILM	EA	4	
4	EA	88884	88884	RESISTOR, FIB, FILM	EA	4	

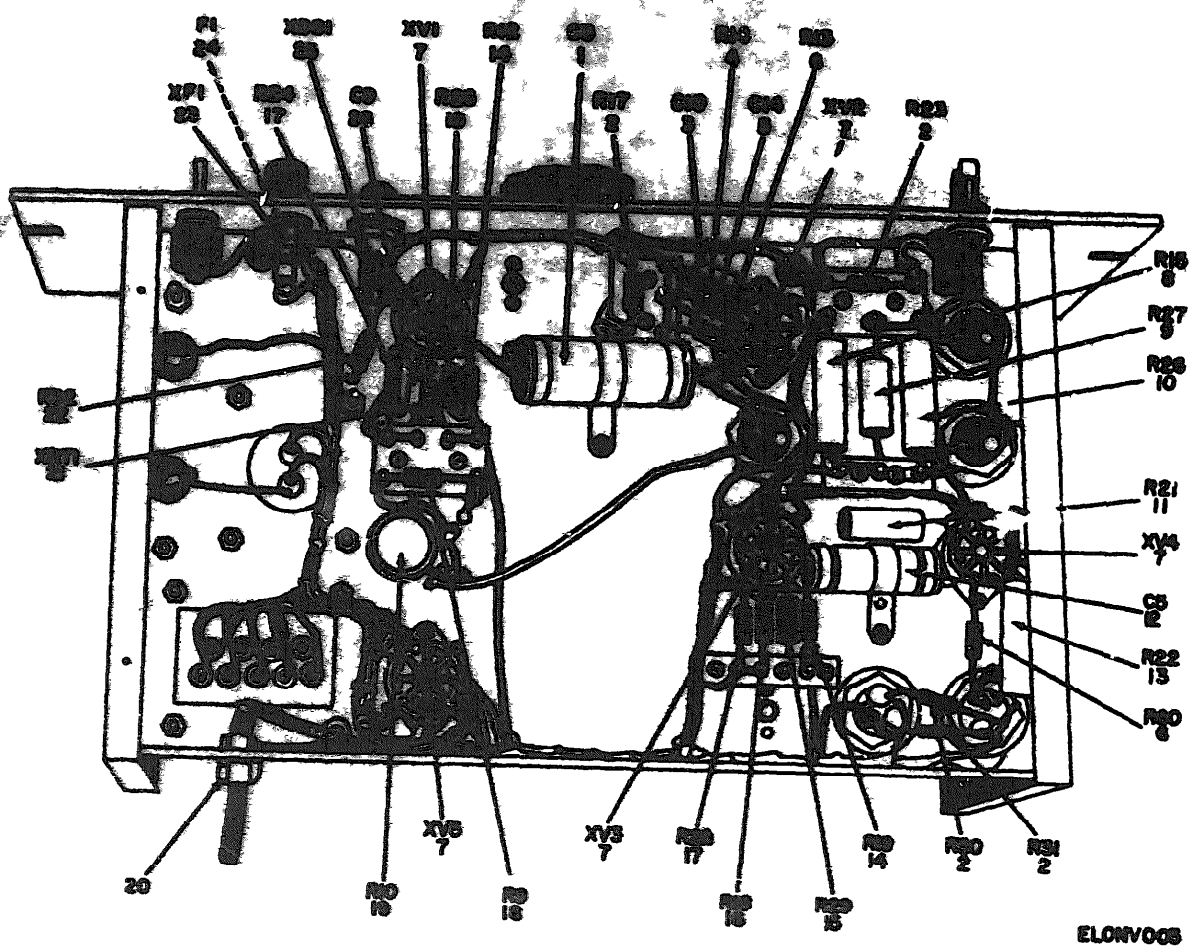


FIGURE 3. SIGNAL GENERATOR TS-312/FSM-1 BOTTOM VIEW

QTY REQD	UN REQD	MFG CODE	NATIONAL STOCK NUMBER	PART NUMBER	FIGURE	DESCRIPTION	USABLE ON CODE	U/M	(7)	QTY REQD IN UNIT
3	1	NIKEZ		CP2011FVVK	01300	CAPACITOR, FID, PPR		EA		1
3	2	FAKEZ	5835-00-165-3816	RC200100J	01300	RESISTOR, FID, 100K		EA		4
3	3	FAKEZ	5818-00-712-6178	CR20000000	01300	CAPACITOR, FID, 100K		EA		1
3	4	FAKEZ	5935-00-279-2335	RC200001K	01300	RESISTOR, FID, 100K		EA		1
3	5	NIKEZ		CR20001J	01300	CAPACITOR, FID, 100K		EA		1
3	6	FAKEZ	5305-00-273-1715	RC300004J	01300	RESISTOR, FID, 100K		EA		2
3	7	FAKEZ	5835-00-053-5786	TS101P01	01300	SOCKET, PLATE, TUBE		EA		5
3	8	FAKEZ	5955-00-174-2746	RC200100	01300	RESISTOR, FID, 100K		EA		1
3	9	FAKEZ	5955-00-101-2415	SKT	01300	RESISTOR, FID, 100K		EA		1
3	10	FAKEZ	5905-00-533-7995	10KT	01300	RESISTOR, FID, 100K		EA		1
3	11	NIKEZ		RC200100	01300	RESISTOR, FID, 100K		EA		1
3	12	FAKEZ	5910-00-835-1941	CP12A1K710003	01300	CAPACITOR, FID, PPR		EA		1
3	13	NIKEZ		RC200100	01300	RESISTOR, FID, 100K		EA		1
3	14	FAKEZ	5935-00-847-8733	RC200000J5	01300	RESISTOR, FID, 100K		EA		2
3	15	FAKEZ	595-00-780-3286	RC2000104J5	01300	RESISTOR, FID, 100K		EA		2
3	16	FAKEZ	5935-00-298-2940	RC2000070J	01300	RESISTOR, FID, 100K		EA		1
3	17	FAKEZ	5935-00-329-6239	RC2000073J5	01300	RESISTOR, FID, 100K		EA		2
3	18	FAKEZ	5935-00-104-1246	RC2000070J5	01300	RESISTOR, FID, 100K		EA		1
3	19	NIKEZ		RC20000000	01300	RESISTOR, VARIABLE		EA		1
3	20	FAKEZ	5975-00-279-0788	SNP	71700	WINDING, ELECTRICAL		EA		1
3	21	FAKEZ	6250-00-295-1614	600-1	71700	LAMPHOLDER		EA		1
3	22	FAKEZ	5945-00-184-8343	RC2000100J5	01300	RESISTOR, FID, 100K		EA		1
3	23	FAKEZ	5930-00-032-8311	HP-DE	71400	FUSEHOLDER		EA		1
3	24	FAKEZ	5320-00-380-4988	FC2000000A	01300	FUSE, CARTRIDGE		EA		1
3	25	FAKEZ	6210-00-185-7997	L100000	01300	LIGHT INDICATOR		EA		1
3	26	NIKEZ		CR200000J	01300	CAPACITOR, FID, 100K		EA		1

NATIONAL STOCK NUMBER AND PART NUMBER INDEX

NOTE: LATEST NATIONAL STOCK NUMBER AND FIGURE ASSIGNMENTS ARE INCLUDED AT END OF INDEX

STOCK NUMBER	FIGURE NO.	ITEM NO.	STOCK NUMBER	FIGURE NO.	ITEM NO.
5910-00-010-0700	3	7	5910-00-000-1000	3	24
5910-00-101-0010	3	9	5910-00-000-1014	3	21
5910-00-100-1000	3	10	5910-00-000-1002	1	8
5910-00-114-0000	2	14	5910-00-070-1003	2	9
5910-00-100-7010	2	3	5910-00-000-7000	3	10
5910-00-100-0010	1	6	5910-00-010-0110	2	10
5910-00-100-0700	1	9	5910-00-070-0007		/
5910-00-100-0077	1	5	5910-0-712-6170	3	3
5910-00-100-0000	2	2	5915-00-713-7988	2	6
5910-00-100-0000	2	8	5910-00-787-5074	2	5
5910-00-000-1770	1	10	5910-00-835-1917	3	12
5910-00-010-0700	3	14	5920-00-892-9311	3	23

PART NUMBER	FSCN	FIG NO.	ITEM NO.	PART NUMBER	FSCN	FIG NO.	ITEM NO.
AN0103-0	00044	1	5	AN0103-000	81349	3	19
AN0103-10	14140	1	15	AN0103-000	81349	2	17
AN0103-11	14140	1	4	AN0103-000	81350	3	13
AN0103-12	14140	1	2	AN0103-001	81349	3	11
AN0103-13	81349	2	10	AN0103-000	81350	3	8
AN0103-14	81349	2	16	AN0103-000	71707	3	20
AN0103-15	81349	2	13	AN0103-000	SS312-6468X		
AN0103-16	81349	2	12	AN0103-000	5380-64882		
AN0103-17	81349	2	10	AN0103-000	TS101P01		
AN0103-18	81349	3	25	AN0103-000	TSE1		
AN0103-19	00044	3	5	AN0103-000	31042		
AN0103-20	81349	3	1	AN0103-000	31043		
AN0103-21	81349	2	9	AN0103-000	47		
AN0103-22	81349	1	7	AN0103-000	5RT		
AN0103-23	71313	1	8	AN0103-000	6F6		
AN0103-24	81349	3	24	AN0103-000	617		
AN0103-25	10133	1	11	AN0103-000	6V6		
AN0103-26	81349	3	25	AN0103-000	659-1		
AN0103-27	81349	3	4	AN0103-000	7057		
AN0103-28	00006	2	22	AN0103-000	81111		
AN0103-29	00006	2	21	AN0103-000	817272		
AN0103-30	00006	2	20	AN0103-000	86086M3C		
AN0103-31	00006	2	19	AN0103-000			

LATEST NATIONAL STOCK NUMBER ASSIGNMENTS

STOCK NUMBER	FIG. NO.	ITEM NO.	STOCK NUMBER	FIG. NO.	ITEM NO.
5905-00-000-7000	2	11	5905-00-273-1715	3	6
5905-00-100-0000	3	22	5905-00-279-2286	3	4
5905-00-100-0000	3	2	5905-00-299-2040	3	16
5905-00-100-0000	2	1	5905-00-369-6929	3	17
5905-00-170-0700	3	8	5860-00-617-9113	2	18
5905-00-100-7000	3	25	5930-00-655-1514	1	12
5905-00-070-0700	3	20	5905-00-758-8896	3	15

PART NUMBER	FSCN	FIG. NO.	ITEM NO.	PART NUMBER	FSCN	FIG. NO.	ITEM NO.
RC2325103JS	81349	3	3	RC2325103JS	81349	3	2
RC2326272JS	81349	3	12	RC2326272JS	81349	3	18
RCR3234731S	81349	2	5	RCR3234731S	81349	3	17
RCR3265631S	81349	2	11	RCR3265631S	81349	3	14
RCR4261041S	71400	3	23	RCR4261041S	81349	3	15
1158-78-23	00006	1	12	1158-78-23	74970	2	1
356-5-120V	81349	3	16	356-5-120V	00108	2	3
524	81349	3	6	524	81349	2	8

RECOMMENDED CHANGES TO EQUIPMENT TECHNICAL MANUALS

SOMETHING WRONG WITH THIS MANUAL?



THEN. JOT DOWN THE DOPE ABOUT IT ON THIS FORM, TEAR IT OUT, FOLD IT AND DROP IT IN THE MAIL!

FROM: (YOUR UNIT'S COMPLETE ADDRESS)
 Commander
 Stateside Army Depot
 ATTN: AMSIA-US
 Stateside, NJ 07703
 DATE: 10 July 1975

PUBLICATION NUMBER: **TM 11-5840-340-12** DATE: **23 Jan 74** TITLE: **Radar Set AN/SPS-76**

BE EXACT. FILL IN WHERE IT IS				IN THIS SPACE TELL WHAT IS WRONG AND WHAT SHOULD BE DONE ABOUT IT
PAGE NO.	PARAGRAPH	FIGURE NO.	TABLE NO.	
2-25	2-28			<p>Recommend that the installation antenna alignment procedure be changed through to specify a 2° IFF antenna lag rather than 1°</p> <p>REASON Experience has shown that with only a 1° lag, the antenna servo system is too sensitive to wind gusting in excess of 15 knots, and has a tendency to rapidly accelerate and decelerate as it hunts, causing strain to the drive train. Hunting is minimized by adjusting the lag to 2° without degradation of operation.</p>
3-10	3-3		3-1	<p>Item 5, Functions column Change "2 db" to "3db "</p> <p>REASON The adjustment procedure for the TRANS POWER FAULT indicator calls for a 3 db (500 watts) adjustment to light the TRANS POWER FAULT indicator</p>
5-6	5-8			<p>Add step f 1 to read, "Replace cover plate removed in step e 1, above "</p> <p>REASON To replace the cover plate</p>
		F03		<p>Zone C 3 On J1-2, change "+24 VDC to "+5 VDC "</p> <p>REASON This is the output line of the 5 VDC power supply + 24 VDC is the input voltage</p>

Typed name, grade or title, and telephone number
Sgt I. N. Despirito 999-1776

SIGN HERE:

RECOMMENDED CHANGES TO EQUIPMENT TECHNICAL MANUALS

SOMETHING WRONG WITH THIS MANUAL?



THEN JOT DOWN THE DOPE ABOUT IT ON THIS FORM TEAR IT OUT FOLD IT AND DROP IT IN THE MAIL!

FROM: (YOUR UNIT'S COMPLETE ADDRESS)

DATE

PUBLICATION NUMBER

DATE

TITLE

BE EXACT PIN-POINT WHERE IT IS

IN THIS SPACE TELL WHAT IS WRONG AND WHAT SHOULD BE DONE ABOUT IT:

PAGE NO.	PARA-GRAPH	FIGURE NO.	TABLE NO.
----------	------------	------------	-----------

TYPE NAME, GRADE OR TITLE, AND TELEPHONE NUMBER

SIGN HERE:

T M 11 - 6 6 2 5 - 9 3 5 - 2 4 P

FILL IN YOUR
USPTO ADDRESS

FOLD BACK

DEPARTMENT OF THE ARMY

POSTAGE AND FEES PAID
DEPARTMENT OF THE ARMY
DDO-014



SPECIAL DELIVERY
PENALTY FOR PRIVATE USE, \$300

Commander
US Army Electronics Command
ATTN: DRSEL-MA-Q
Fort Monmouth New Jersey 07703

FOLD BACK

REVERSE OF DA FORM 3826 (7-75)

RECOMMENDED CHANGES TO EQUIPMENT TECHNICAL MANUALS

SOMETHING WRONG WITH THIS MANUAL?



THEN JOT DOWN THE DOPE ABOUT IT ON THIS FORM TEAR IT OUT FOLD IT AND DROP IT IN THE MAIL!

FROM: (YOUR UNIT'S COMPLETE ADDRESS)

DATE

PUBLICATION NUMBER

DATE

TITLE

BE EXACT PIN-POINT WHERE IT IS

IN THIS SPACE TELL WHAT IS WRONG AND WHAT SHOULD BE DONE ABOUT IT:

PAGE NO.	PARA-GRAPH	FIGURE NO.	TABLE NO.
----------	------------	------------	-----------

TYPE NAME, GRADE OR TITLE AND TELEPHONE NUMBER

SIGN HERE.

T M 1 1 - 6 6 2 5 - 9 3 5 - 2 4 P

FILL IN YOUR
UNIT'S ADDRESS

FOLD BACK

DEPARTMENT OF THE ARMY

POSTAGE AND FEE PAID
DEPARTMENT OF THE ARMY
DCB-314



OFFICIAL BUSINESS
PENALTY FOR PRIVATE USE \$300

Commander
US Army Electronics Command
ATTN DRSEL-MA-Q
Fort Monmouth New Jersey 07705

FOLD BACK

TEAR ALONG DOTTED LINE

RECOMMENDED CHANGES TO EQUIPMENT TECHNICAL MANUALS



SOMETHING WRONG WITH THIS MANUAL?

THEN. JOT DOWN THE
DOPE ABOUT IT ON THIS
FORM TEAR IT OUT FOLD
IT AND DROP IT IN THE
MAIL!

FROM: (YOUR UNIT'S COMPLETE ADDRESS)
DATE

PUBLICATION NUMBER DATE TITLE

BE EXACT. PIN-POINT WHERE IT IS				IN THIS SPACE TELL WHAT IS WRONG AND WHAT SHOULD BE DONE ABOUT IT:
PAGE NO.	PARA-GRAPH	FIGURE NO.	TABLE NO.	

TEAR ALONG DOTTED LINE

TYPED NAME, GRADE OR TITLE, AND TELEPHONE NUMBER SIGN HERE:

DA FORM 2028-2 (TEST)

P.S.—IF YOUR OUTFIT WANTS TO KNOW ABOUT YOUR MANUAL “FIND” MAKE A CARBON COPY OF THIS AND GIVE IT TO YOUR HEADQUARTERS.

FILL IN YOUR
UNIT'S ADDRESS

FOLD BACK

DEPARTMENT OF THE ARMY

POSTAGE AND FEES PAID
DEPARTMENT OF THE ARMY
GOD-216



OFFICIAL BUSINESS
PENALTY FOR PRIVATE USE \$300

Commander
US Army Electronics Command
ATTN ORSEL-MA-Q
Fort Monmouth, New Jersey 07703

FOLD BACK

By Order of the Secretary of the Army:

BERNARD W ROGERS
General, United States Army
Chief of Staff

J. C. PENNINGTON

Brigadier General, United States Army
The Adjutant General

Distribution:

Active Army

USASA (3)
 COE (1)
 TSG (1)
 DARCOM (1)
 TECOM (2)
 USACC (4)
 TRADOC (2)
 OS Maj Comd (4)
 MDW (1)
 Armies (2)
 Corps (2)
 Ft Gillem (10)
 Ft Gordon (10)
 Ft Benning (10)
 Ft Cavazos (3)
 HISA (Ft Monmouth) (33)
 Ft Richardson (ECOM Ode) (2)
 Svc Colleges (1)
 USMA (2)
 USAJCS (2)
 USAOC&S (2)
 USAADS (2)
 USAFAS (2)
 USAARMS (2)
 USAIS (2)
 USAES (2)
 USASATC&S (2)
 AD (1) except
 SAAD (30)
 LEAD (14)
 TOAD (14)
 SHAD (2)
 USA Dep (2)
 Sig Sec USA Dep (2)
 Sig Dep (2)
 AFIP (2)

MAAG (1)	29-37
USARMIS (1)	29-41
USAERDAA (1)	29-51
USAERDAW (1)	29-55
Sig FLDMS (Less Europe) (1)	29-56
USAARENBD (1)	29-76
Units org under fol TOE- 1 ea.	29-79
1-127	29-85
1-127	29-88
11-16	29-87
11-17	29-105
11-27	29-109
11-37	29-134
11-97	29-136
11-98	30-25
11-117	30-29
11-127	31-106
11-225	32-52
11-228	32-56
11-237	32-57
11-202	32-64
11-347	32-67
11-500(AA-AC)	37
17	37-100
17-100	39-51
29-1	39-52
29-11	44-235
29-15	44-237
29-18	55-80
29-17	55-90
29-21	55-157
29-25	55-405
29-28	55-407
29-27	55-457
29-35	55-458
29-36	57
	57-100

ARNG & USAF: None.

For explanation of abbreviations, used see AR 310-50.

TM 11-6625-935-24P

DEPARTMENT OF THE ARMY
US ARMY AG PUBLICATIONS CENTER
1488 WOODSON ROAD
ST LOUIS MISSOURI 63114
OFFICIAL BUSINESS
PENALTY FOR PRIVATE USE \$300

POSTAGE AND FEES PAID
DEPARTMENT OF THE ARMY
BOD 314

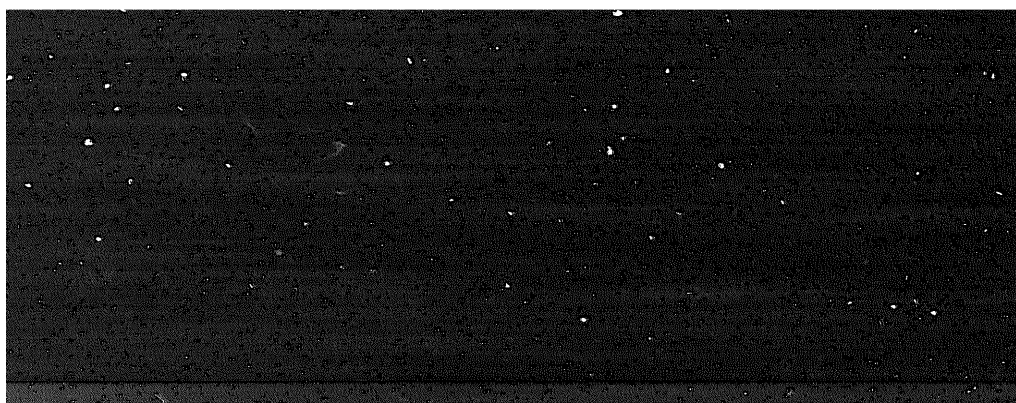


END

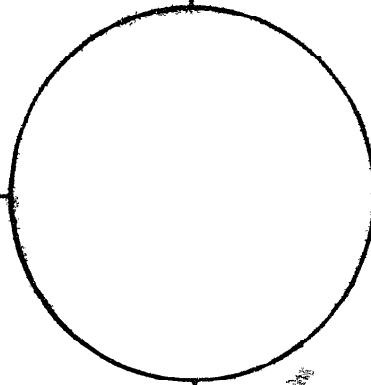
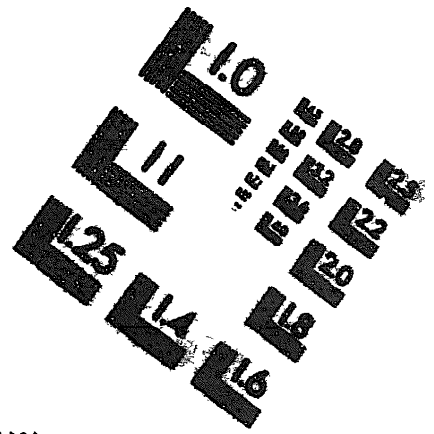
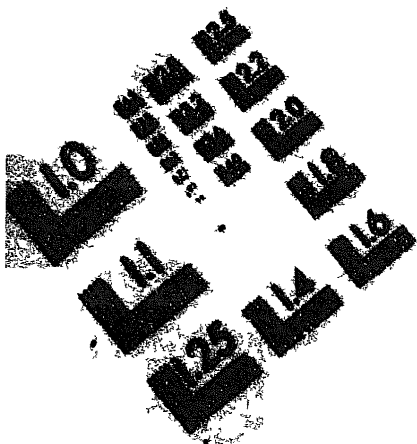
03-20-83

DATE





MICROFORM
TEST TARGET



150 MM

1.6 mm (σ = 81 μm)



1.5 mm (σ = 1.89 mm)

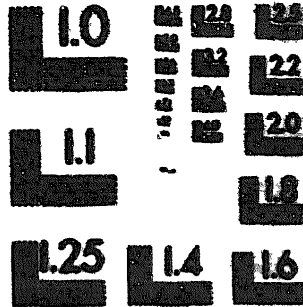
ABCDEFGHIJKLMN O PQRSTU VWXYZ
abcdefghijklmnopqrstuvwxyz
1234567890 @ £ / % & 1/2 1/4 → × 8 @ *

2.0 mm (σ = 1.37 mm)

ABCDEFGHIJKLMN O PQRSTU VWXYZ
abcdefghijklmnopqrstuvwxyz
1234567890 @ £ / % & 1/2 1/4 → × 8 @ *

2.5 mm (σ = 1.77 mm)

ABCDEFGHIJKLMN O PQRSTU VWXYZ
abcdefghijklmnopqrstuvwxyz
1234567890 @ £ / % & 1/2 1/4 → × 8 @ *



1.6 mm (σ = 81 μm)



1.5 mm (σ = 1.89 mm)

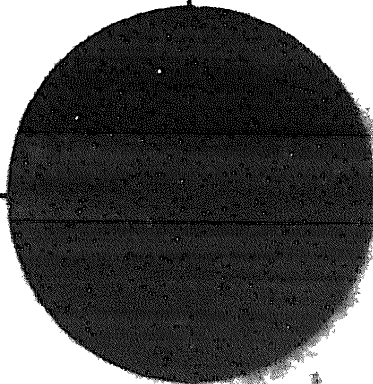
ABCDEFGHIJKLMN O PQRSTU VWXYZ 1234567890
abcdefghijklmnopqrstuvwxyz
1234567890 @ £ / % & 1/2 1/4 → × 8 @ *

2.0 mm (σ = 1.37 mm)

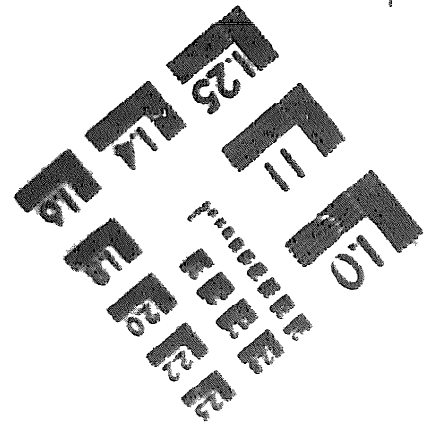
ABCDEFGHIJKLMN O PQRSTU VWXYZ
abcdefghijklmnopqrstuvwxyz
1234567890 @ £ / % & 1/2 1/4 → × 8 @ *

2.5 mm (σ = 1.77 mm)

ABCDEFGHIJKLMN O PQRSTU VWXYZ
abcdefghijklmnopqrstuvwxyz
1234567890 @ £ / % & 1/2 1/4 → × 8 @ *



200 MM



250 MM